

**Installation Designer**

File Project Information

Project Name: Solutions Electrical Max. Volts Drop.: Total V. Drop: 5.0 %

Additional Info.: 250.1513 104.7244 Pg: 1 Zoom factor: 5 %

**EXPAND YOUR PROJECT**

Connected To | Load I.D. | Phase | Type | Volt (V) | Volt Drop (%) | Length (m) | De-Rating | Load Current | Cores

Add New Circuit  
Edit Circuit  
Delete Circuit  
Optimize Design  
Design Installation  
Schematics  
Earth Loop Imp  
Full Parts List  
Discrimination  
Print Screen Area  
Display Drawing  
Installation  
Schematics  
Earth Loop  
Draw Load Centre  
Display Drawing  
Cable Calculations Results

**Installation Designer**

File Project Information

Project Name: Solutions Electrical Max. Volts Drop.: Total V. Drop: 5.0 %

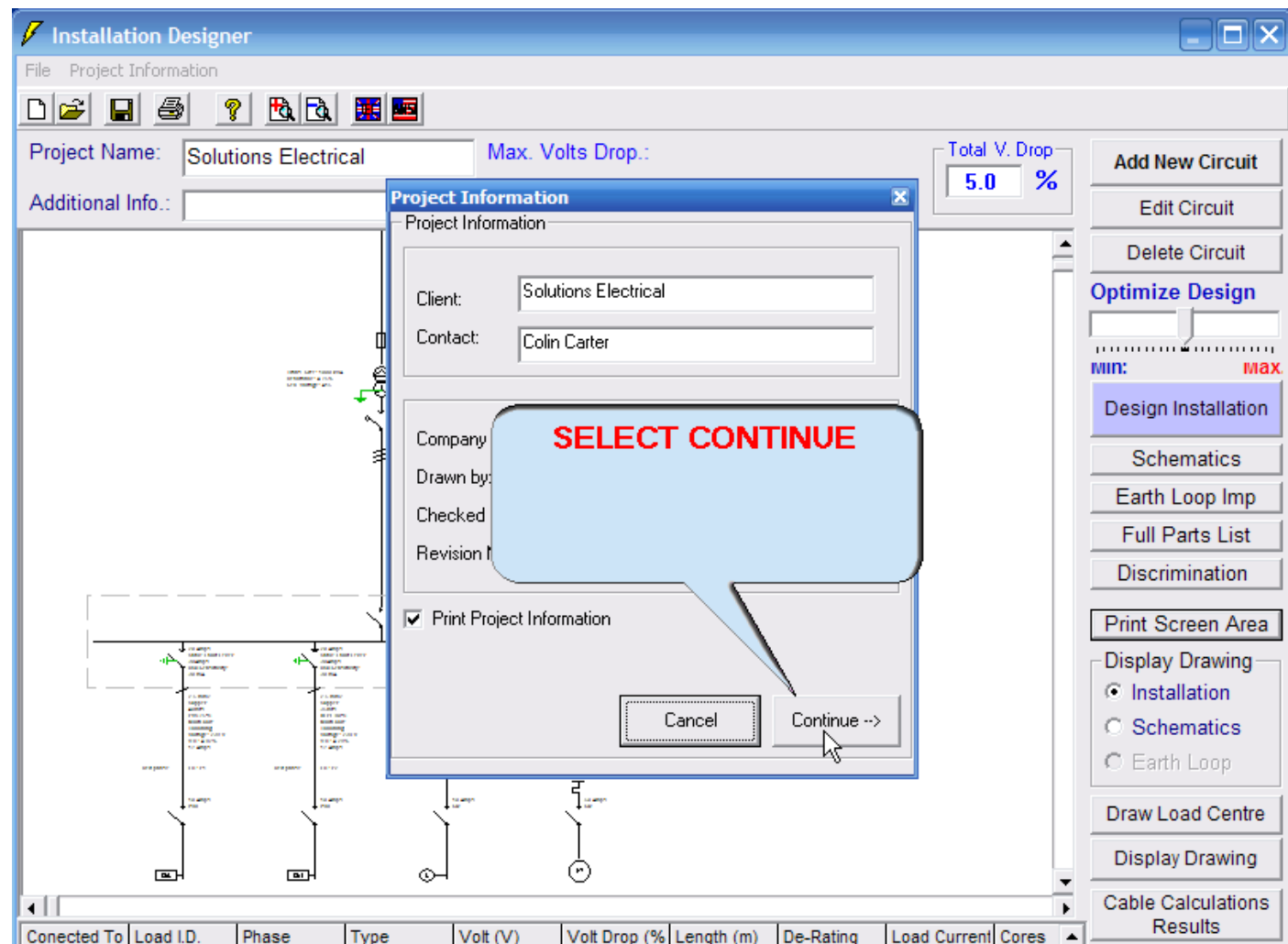
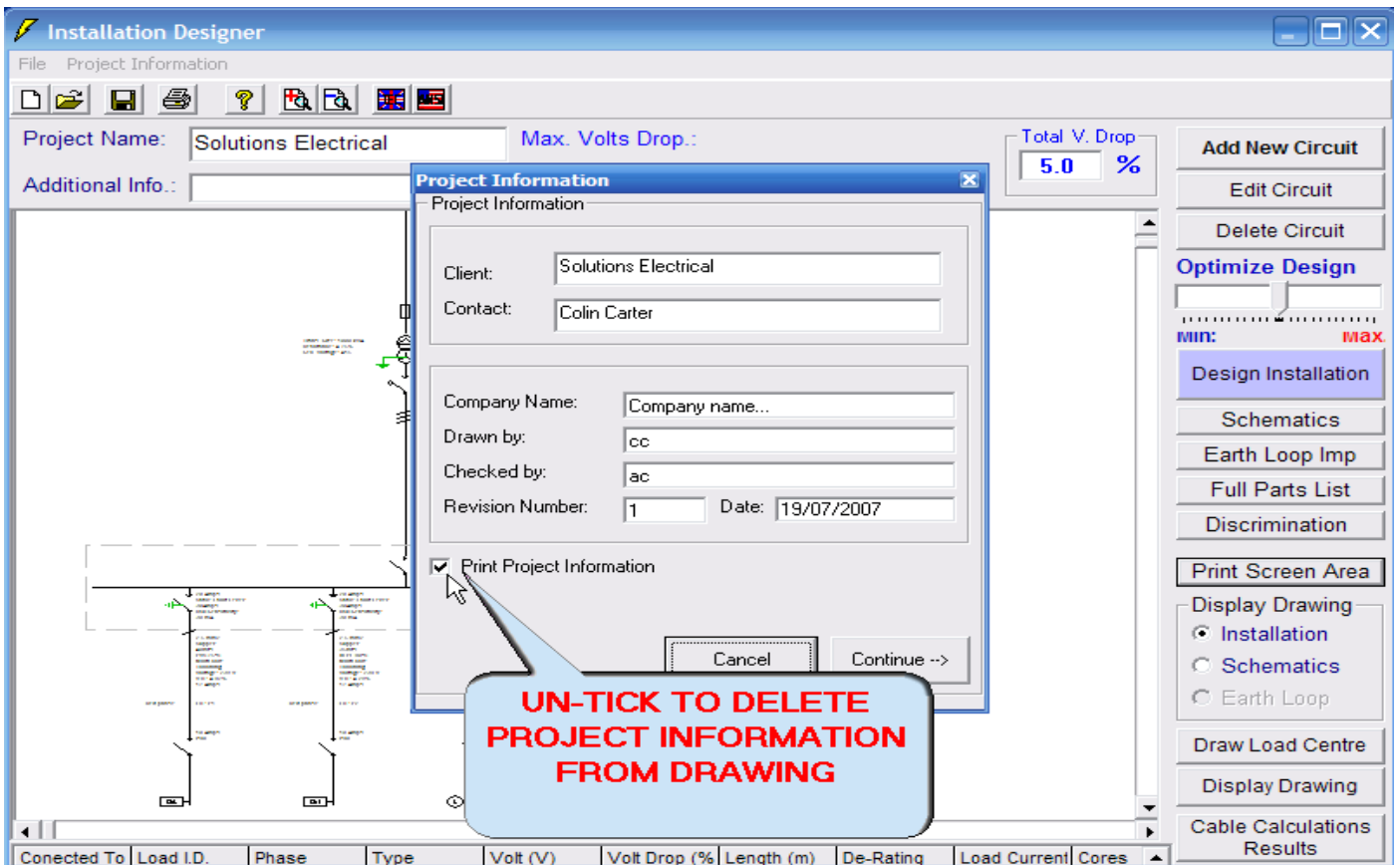
Additional Info.: 114.7308 103.7184 Pg: 1 Zoom factor: 5 %

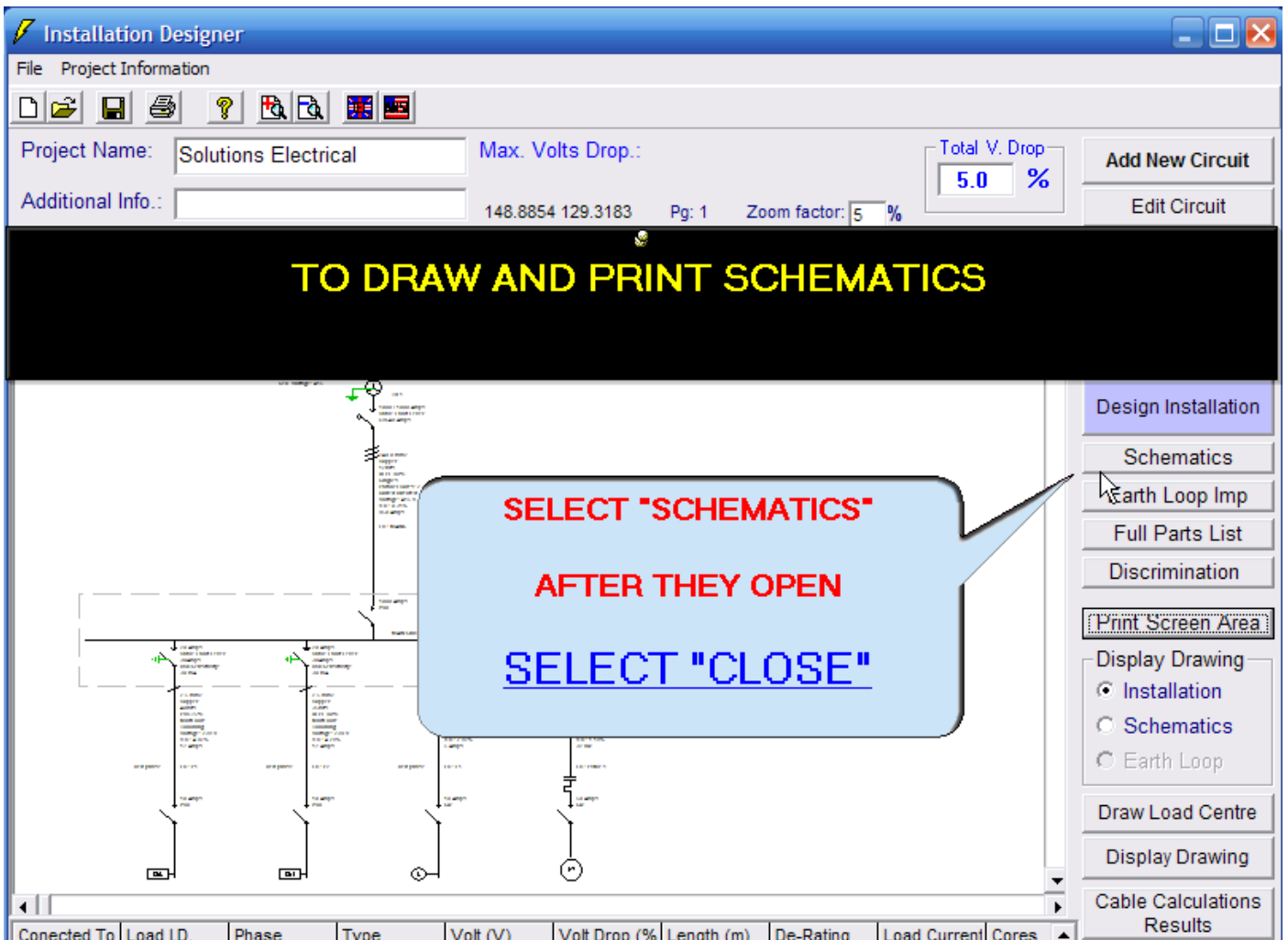
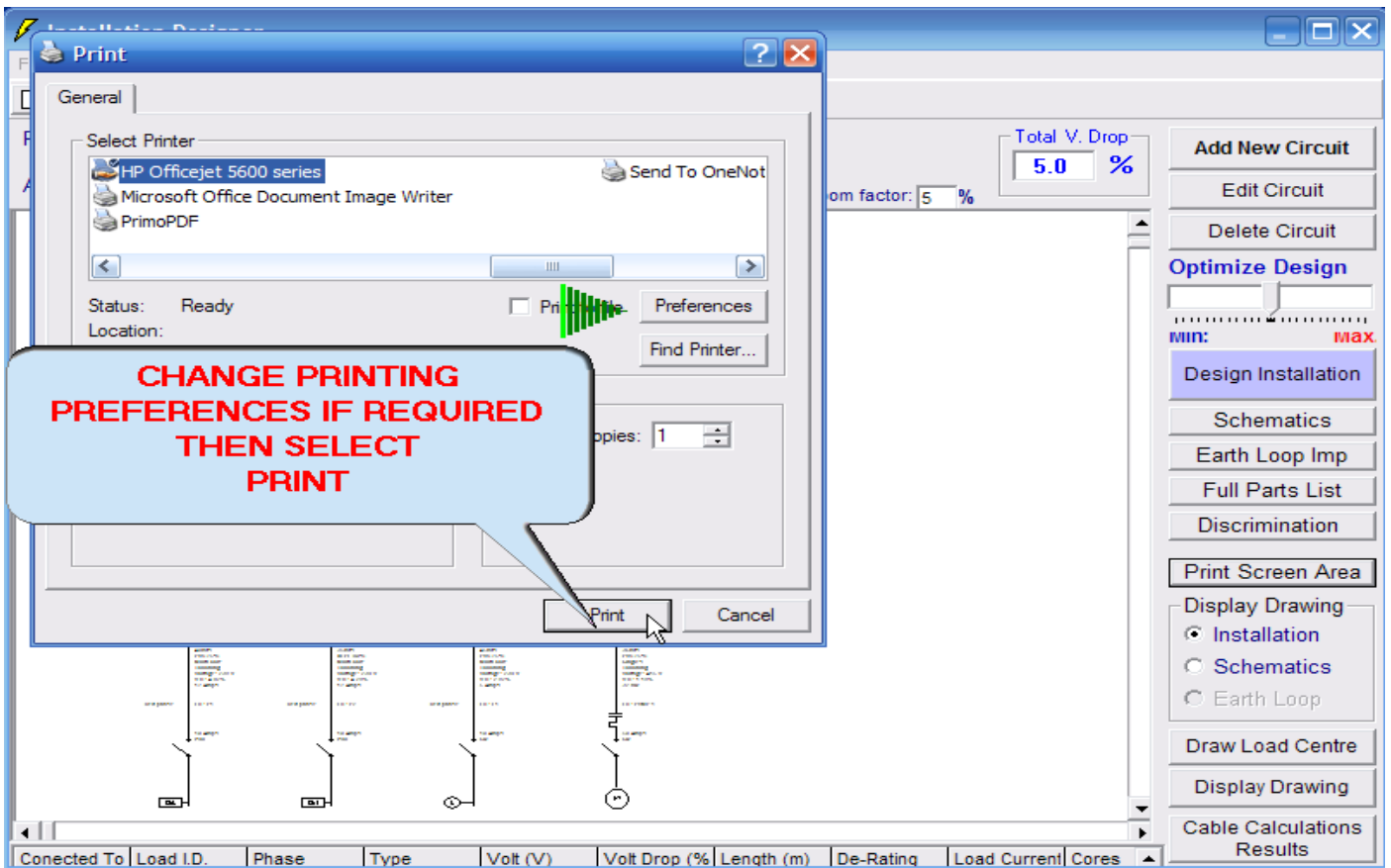
**OPEN YOUR PROJECT TO FILL THE SCREEN AREA**

**AND THEN PRESS "PRINT SCREEN AREA"**

Connected To | Load I.D. | Phase | Type | Volt (V) | Volt Drop (%) | Length (m) | De-Rating | Load Current | Cores

Add New Circuit  
Edit Circuit  
Delete Circuit  
Optimize Design  
Design Installation  
Schematics  
Earth Loop Imp  
Full Parts List  
Discrimination  
Print Screen Area  
Display Drawing  
Installation  
Schematics  
Earth Loop  
Draw Load Centre  
Display Drawing  
Cable Calculations Results





**Installation Designer**

File Project Information

Project Name: Solutions Electrical Max. Volts Drop.: Total V. Drop 5.0 %

Additional Info.: 152.2528 107.5238 Pg: 1 Zoom factor: 5 %

**YOUR DRAWING PROJECT WILL APPEAR AS A SCHEMATIC**

**YOUR SCHEMATIC DRAWING WILL APPEAR**

Design Installation  
Schematics  
Earth Loop Imp  
Full Parts List  
Discrimination  
Print Screen Area  
Display Drawing  
Installation  
**Schematics**  
Earth Loop  
Draw Load Centre  
Display Drawing  
Cable Calculations Results

Connected To	Load I.D.	Phase	Type	Volt (V)	Volt Drop (%)	Length (m)	De-Rating	Load Current	Cores
--------------	-----------	-------	------	----------	---------------	------------	-----------	--------------	-------

**TO PRINT:  
ADJUST THE SIZE OF YOUR DRAWING TO FIT THE SCREEN  
SIZE  
THEN SELECT "PRINT SCREEN AREA"**

Company Name: Company name...

Drawn by: cc

Checked by: ac

Revision Number: 1 Date: 19/07/2007

Print Project Information

Cancel Continue -->

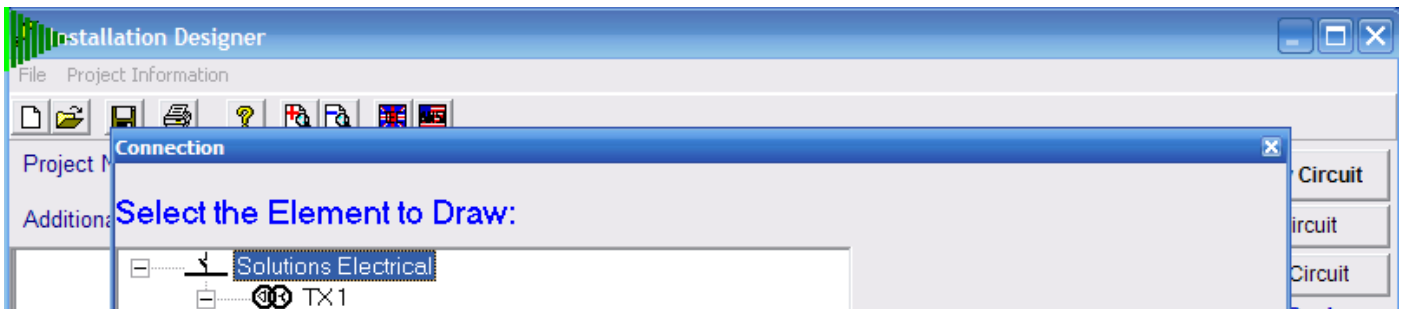
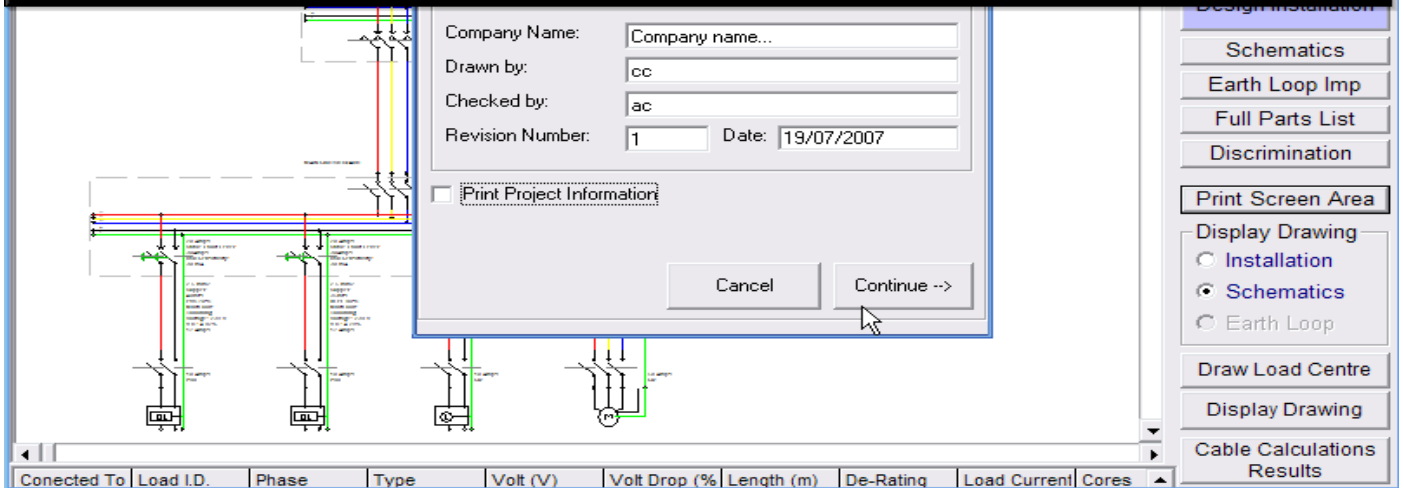
Design Installation  
Schematics  
Earth Loop Imp  
Full Parts List  
Discrimination  
**Print Screen Area**  
Display Drawing  
Installation  
Schematics  
Earth Loop  
Draw Load Centre  
Display Drawing  
Cable Calculations Results

Connected To	Load I.D.	Phase	Type	Volt (V)	Volt Drop (%)	Length (m)	De-Rating	Load Current	Cores
--------------	-----------	-------	------	----------	---------------	------------	-----------	--------------	-------

**TO PRINT:  
ADJUST THE SIZE OF YOUR DRAWING TO FIT THE SCREEN  
SIZE**

**THEN SELECT "PRINT SCREEN AREA"**

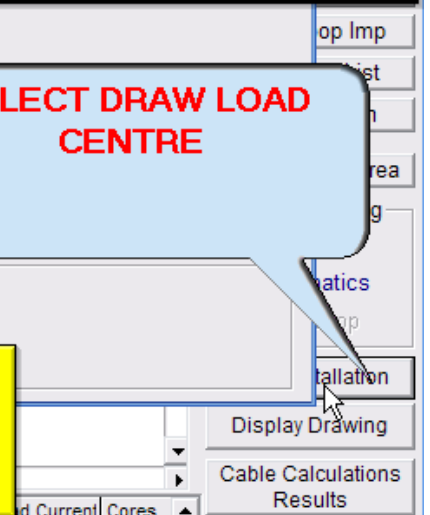
**YOUR DRAWING SHOULD PRINT**



**TO DRAW AN "ELEMENT" OR LEG OF YOUR PROJECT**

**SELECT DRAW LOAD  
CENTRE**

**TO DRAW AN "ELEMENT" OR LEG OF YOUR  
PROJECT**



# TO DRAW AN "ELEMENT" OR LEG OF YOUR PROJECT

Additional: **Select the Element to Draw:**

**SELECT THE ELEMENT THAT YOU WISH TO DRAW**

Element selected

# TO DRAW AN "ELEMENT" OR LEG OF YOUR PROJECT

Display Drawing  
Cable Calculations Results

Installation Designer

File Project Information

Project Information

Additional: **Select the Element to Draw:**

**SELECT "NEXT"**

Element selected  
PUMP 1

Cancel Next

Connected To	Load I.D.	Phase	Type	Volt (V)	Volt Drop (%)	Length (m)	De-Rating	Load Current	Cores
--------------	-----------	-------	------	----------	---------------	------------	-----------	--------------	-------

Display Drawing  
Cable Calculations Results

# TO PRINT AN ELEMENT OR LEG OF YOUR PROJECT

**ADJUST THE DRAWING SIZE THEN  
SELECT THE PRINT SCREEN  
AREA**

Additional Info.: 107.6816 151.6181 Pg: 1 Zoom factor: 5.0 %

63 Amps  
Type 'C' CB  
Cable Fault Level:  
1776 Amps

16.0 mm2  
Copper  
36mts  
PVC 70°C  
Singles  
Touching

Print Screen Area

Display Drawing

Installation

Schematics

Earth Loop

Draw Installation

Display Drawing

Cable Calculations Results

Connected To	Load I.D.	Phase	Type	Volt (V)	Volt Drop (%)	Length (m)	De-Rating	Load Current	Cores
--------------	-----------	-------	------	----------	---------------	------------	-----------	--------------	-------

**TO FINE TUNE THE RATE OF EXPANSION AND  
CONTRACTION OF THE SCREEN SWIPE YOUR  
MOUSE OVER THE "ZOOM" FACTOR AND THEN  
TYPE IN 3 OR SOME SMALL NUMBER:  
ADJUST BY USING THE + - BUTTONS**

Installation Designer

File Project Information

Project Name: Solution Electrical Max. Volts Drop: Total V. Drop 5.0 %

Additional Info.: 104.0646 118.0772 Pg: 1 Zoom factor: 2.1 %

63 Amps  
Type 'C' CB

Print Screen Area

Display Drawing

Installation

Schematics

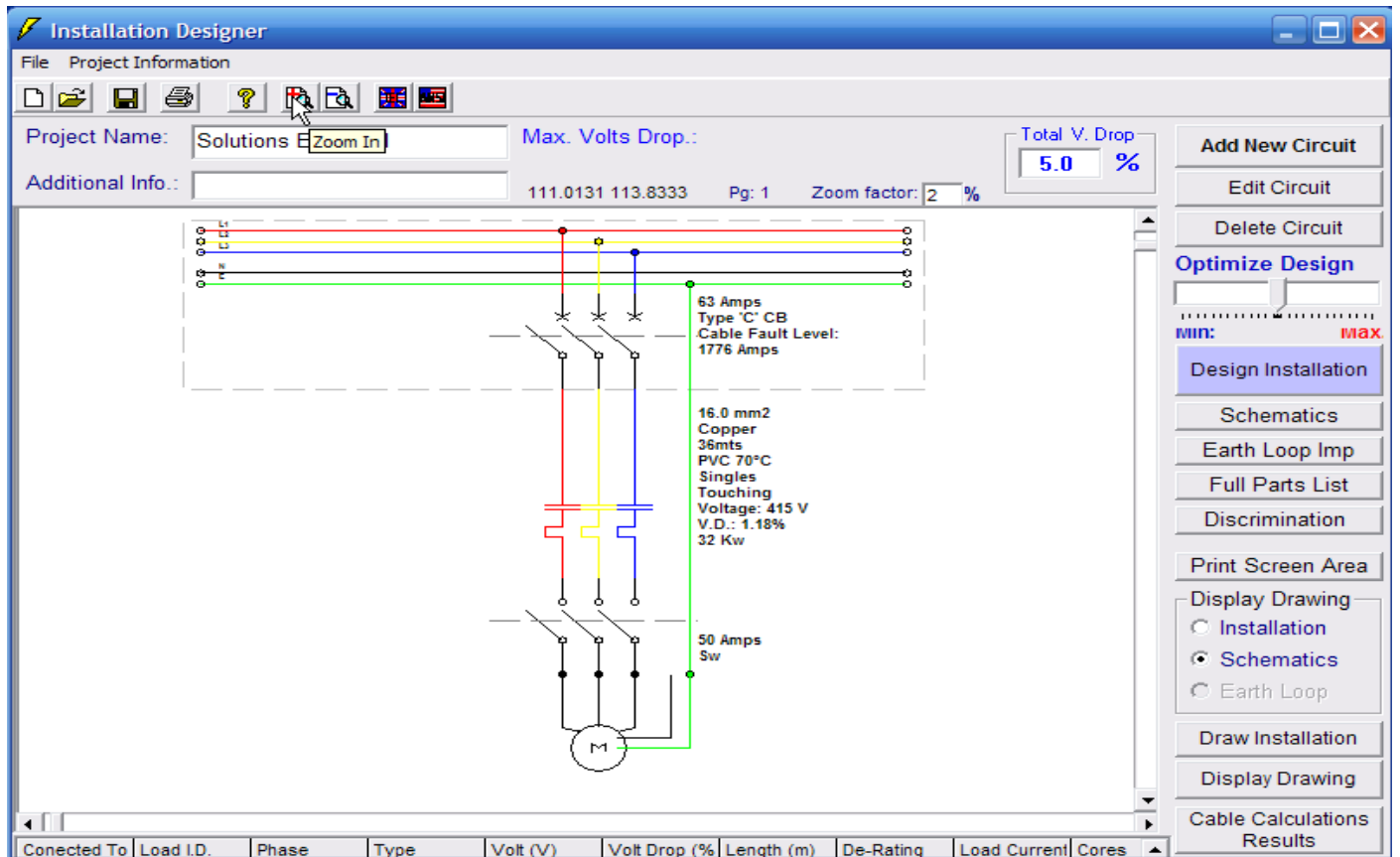
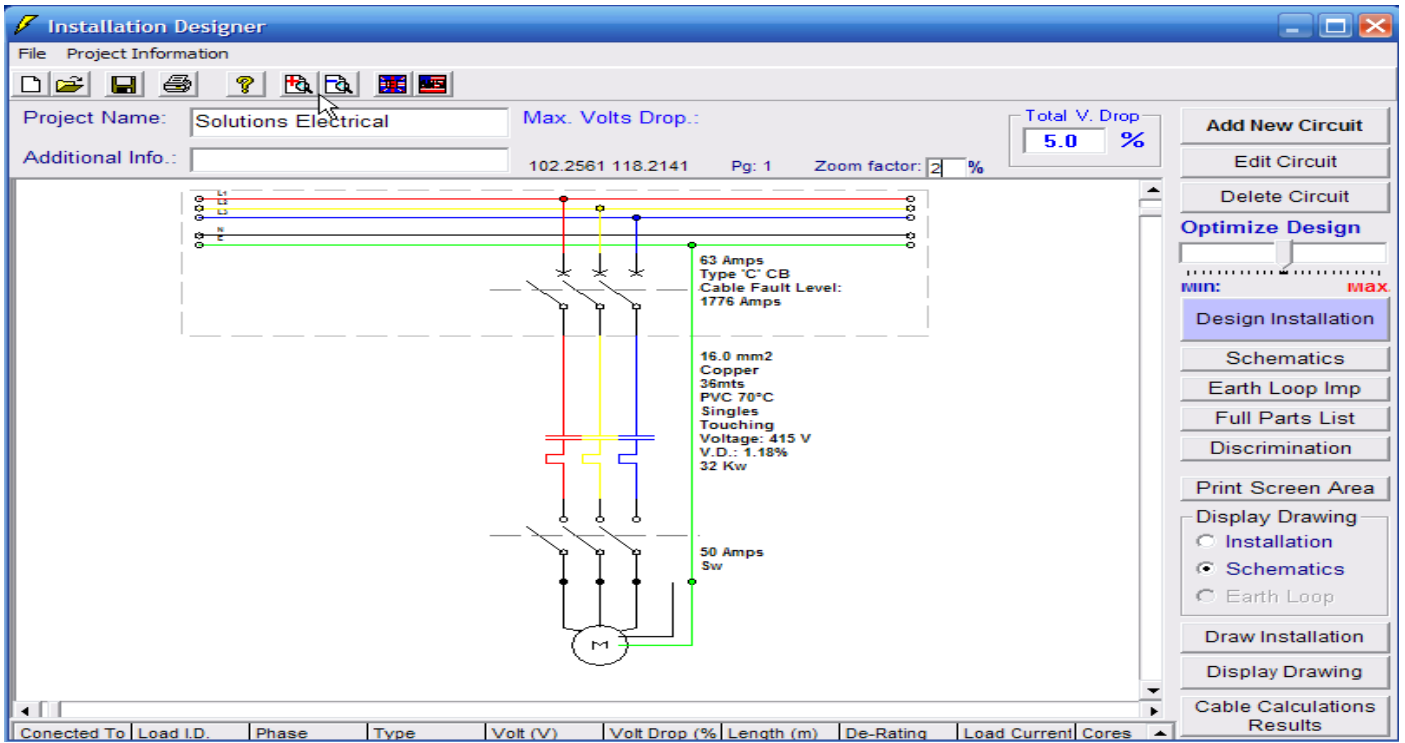
Earth Loop

Draw Installation

Display Drawing

Cable Calculations Results

Connected To	Load I.D.	Phase	Type	Volt (V)	Volt Drop (%)	Length (m)	De-Rating	Load Current	Cores
--------------	-----------	-------	------	----------	---------------	------------	-----------	--------------	-------



TO PRINT A LEG OR ELEMENT OF YOUR PROJECT

SELECT THE PRINT SCREEN MENU  
AFTER ADJUSTING THE DRAWING TO THE BEST POSSIBLE  
SCREEN SIZE :  
PRESS "PRINT SCREEN AREA"

SELECT CONTINUE AND YOUR DRAWING WILL BE PRINTED

The screenshot displays a software interface for electrical design. The main window shows a 3-phase schematic with red, yellow, and blue lines. A mouse cursor is positioned over the schematic. To the right of the schematic, the following text is displayed: "PVC 70°C", "Singles", "Touching", "Voltage: 415 V", "V.D.: 1.18%", and "32 Kw". Below the schematic, a "50 Amps Sw" (switch) is shown connected to a motor symbol labeled "M".

On the right side of the interface, there is a vertical menu with the following options:

- Full Parts List
- Discrimination
- Print Screen Area
- Display Drawing
  - Installation
  - Schematics
  - Earth Loop
- Draw Installation
- Display Drawing
- Cable Calculations Results

At the bottom of the interface, there is a table with the following columns: "Connected To", "Load I.D.", "Phase", "Type", "Volt (V)", "Volt Drop (%)", "Length (m)", "De-Rating", "Load Current", and "Cores".