

Electrical Estimating

Project Name:

1. Select main group:

- Conduit and Fittings
- Cable Tray
- Lighting Fixtures
- Surface ducts
- Bus Duct
- Underfloor duct
- Equipment connection
- Assemblies
- Fuse boards and Internal equipment
- Switches, Socket outlets and MISC e

2. Select Sub-Group:

- Reducing Bushings
- Reducing Washers
- Bushed Nipples
- Couplings and offset Nipples
- Connectors
- Straps and Spacers
- Conduit Clamps and Entrance caps
- PVC Coated conduit, Elbows and Couplir
- PVC Coated Straps and Clamps, U-bolts a
- PVC Conduit Bodies
- PVC Coated Junction Boxes
- Hanger Fittings
- Steel channel (Strut) and fittings

3. Select Type:

Miscellaneous Setup

Create Assembly

Project Information

Edit Delete

Total Time:	Hrs : Min	Total Material Cost: \$	0.0
Time Multiplier:	00 : 00	Add % :	0
Hourly rate: \$	1	Total Labor Cost: \$	0.0
	0.0	Add % :	0

SELECT ITEM FROM THE MAIN MENU

INPUT AN ITEM INTO THE ESTIMATING

Electrical Estimating

Project Name:

1. Select main group:

- Conduit and Fittings
- Cable Tray
- Lighting Fixtures
- Surface ducts
- Bus Duct
- Underfloor duct
- Equipment connection
- Assemblies
- Fuse boards and Internal equipment
- Switches, Socket outlets and MISC equip

2. Select Sub-Group:

- Perforated cable tray
- Cable Ladder rack
- Louver Opening cable tray and fittings
- Aluminium Ladder type cable tray

3. Select Type:

Miscellaneous Setup

Create Assembly

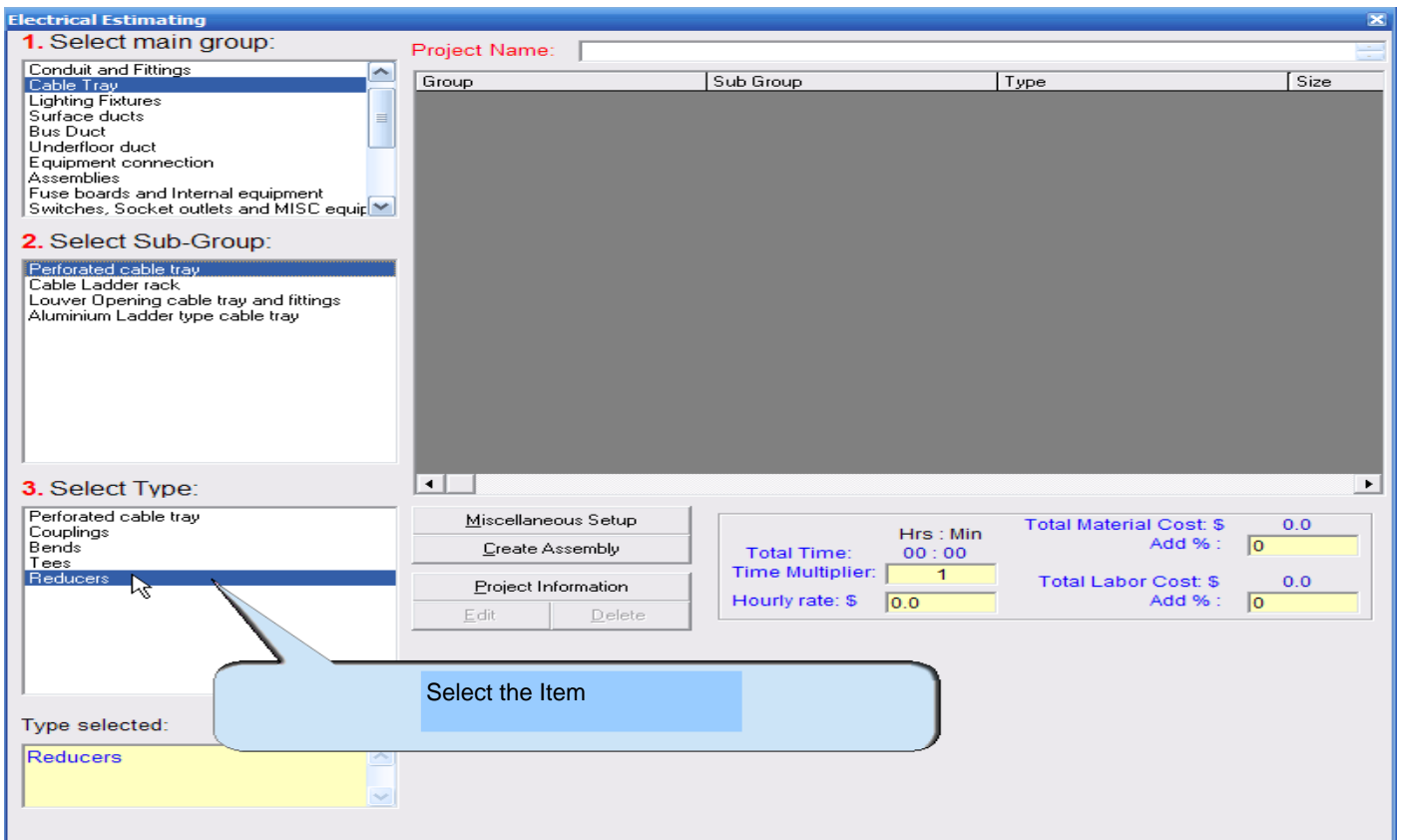
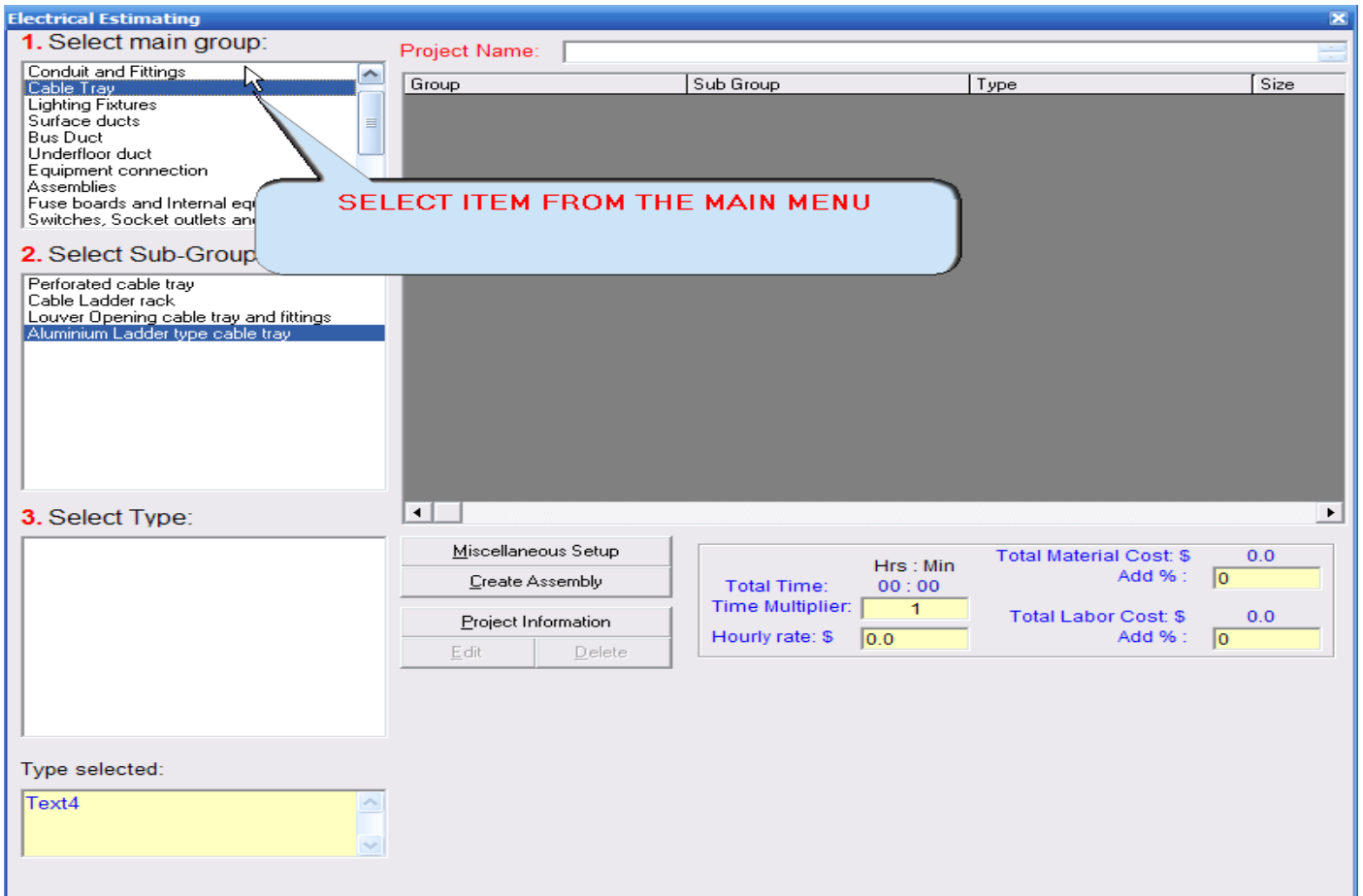
Project Information

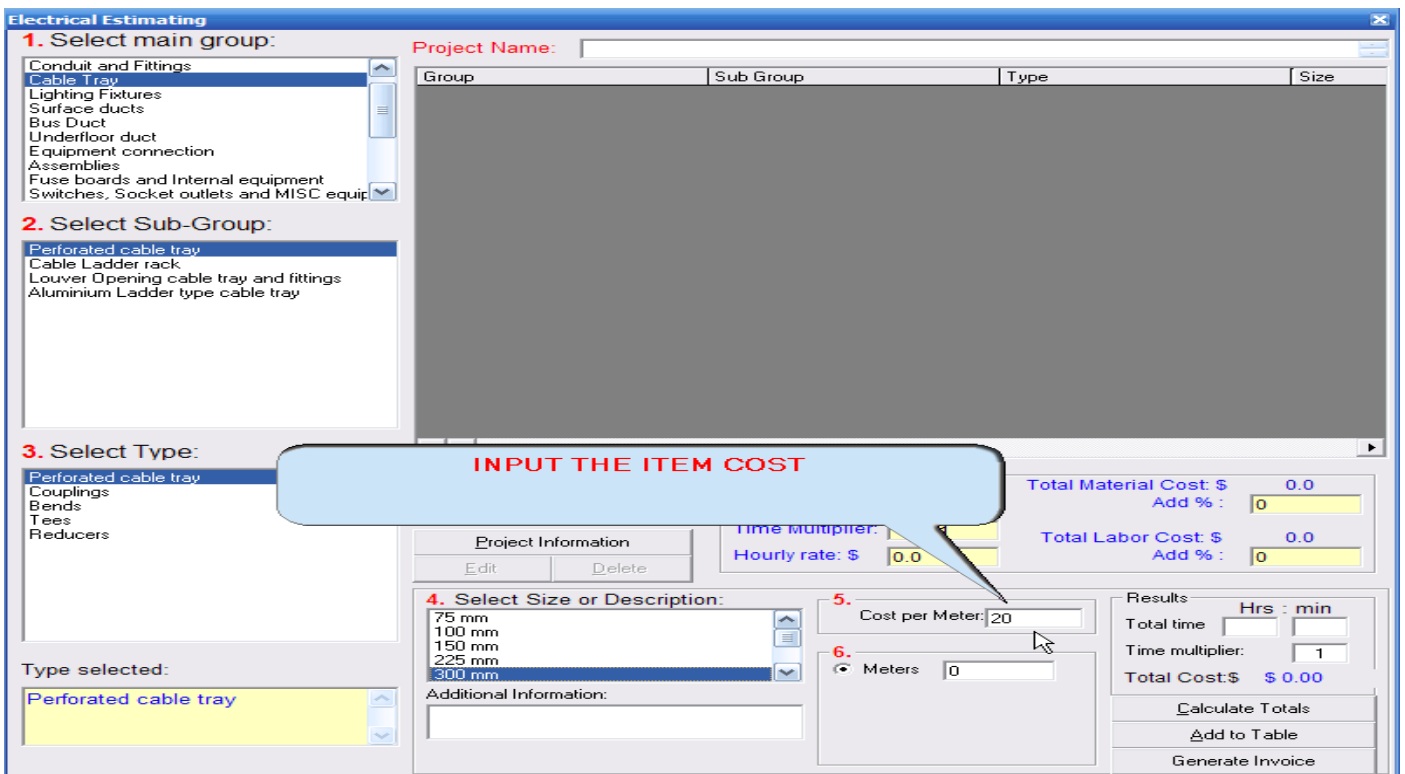
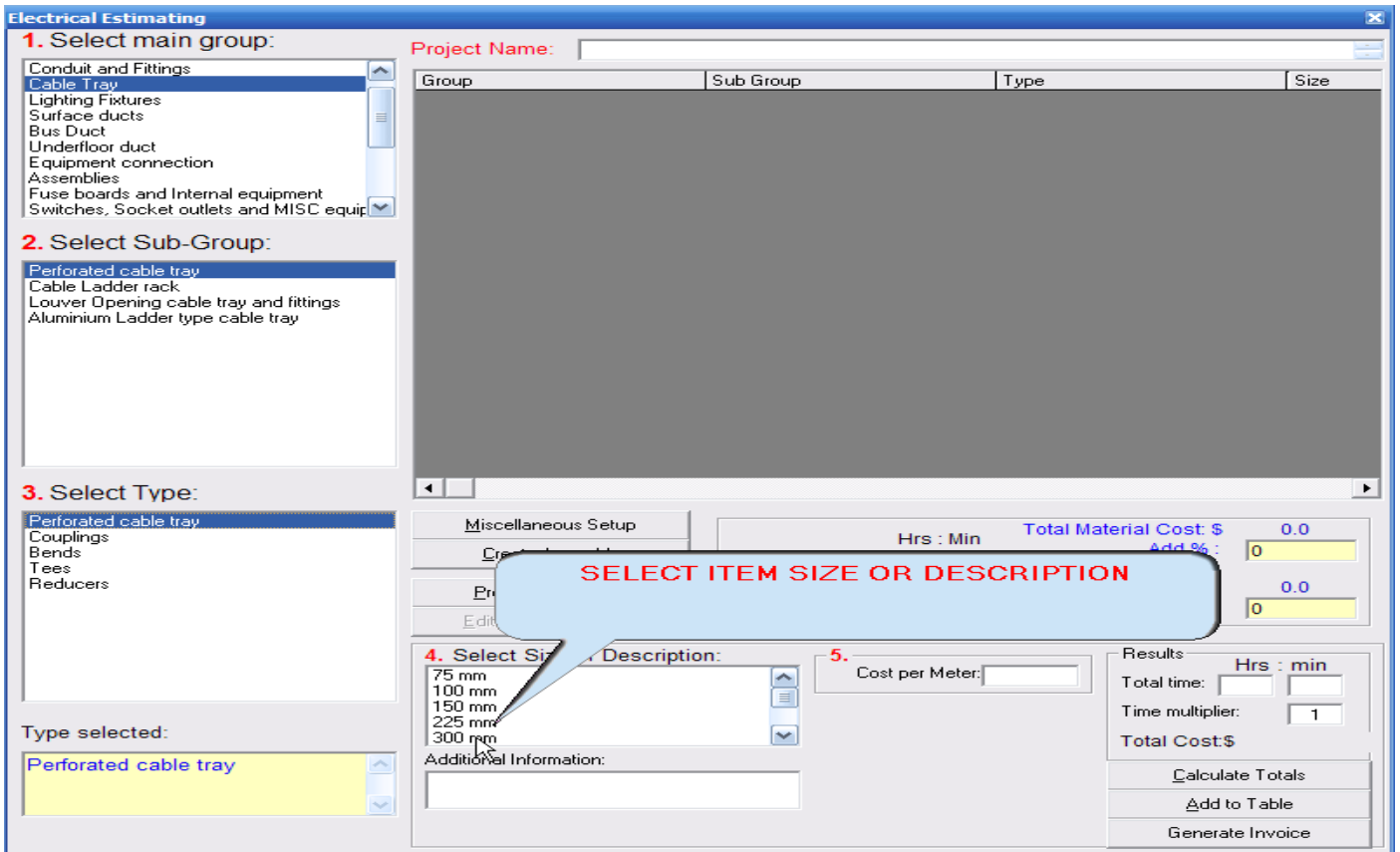
Edit Delete

Total Time:	Hrs : Min	Total Material Cost: \$	0.0
Time Multiplier:	00 : 00	Add % :	0
Hourly rate: \$	1	Total Labor Cost: \$	0.0
	0.0	Add % :	0

Type selected:

SELECT ITEM FROM THE SUB MENU





Electrical Estimating

1. Select main group:

- Conduit and Fittings
- Cable Tray**
- Lighting Fixtures
- Surface ducts
- Bus Duct
- Underfloor duct
- Equipment connection
- Assemblies
- Fuse boards and Internal equipment
- Switches, Socket outlets and MISC equip

2. Select Sub-Group:

- Perforated cable tray**
- Cable Ladder rack
- Louver Opening cable tray and fittings
- Aluminium Ladder type cable tray

3. Select Type:

- Perforated cable tray**
- Couplings
- Bends
- Tees
- Reducers

Type selected: **Perforated cable tray**

Project Name: _____

Group	Sub Group	Type	Size

Miscellaneous Setup

Hrs : Min 00 : 00

Total Material Cost: \$ 0.0
Add % : 0

Total Labor Cost: \$ 0.0
Add % : 0

4. Select Size or Description:

- 75 mm
- 100 mm
- 150 mm
- 225 mm
- 300 mm**

Additional Information: _____

5. Counter Meter: 20

6. Meters: 20

Results

Hrs : min

Total time: _____

Time multiplier: 1

Total Cost: \$ \$ 0.00

Calculate Totals

Add to Table

Generate Invoice

INPUT THE ITEM QUANTITY

Electrical Estimating

1. Select main group:

- Conduit and Fittings
- Cable Tray**
- Lighting Fixtures
- Surface ducts
- Bus Duct
- Underfloor duct
- Equipment connection
- Assemblies
- Fuse boards and Internal equipment
- Switches, Socket outlets and MISC equip

2. Select Sub-Group:

- Perforated cable tray**
- Cable Ladder rack
- Louver Opening cable tray and fittings
- Aluminium Ladder type cable tray

3. Select Type:

- Perforated cable tray**
- Couplings
- Bends
- Tees
- Reducers

Type selected: **Perforated cable tray**

Project Name: _____

Group	Sub Group	Type	Size

Miscellaneous Setup

Create Assembly

Project Information

Edit

Total Time: 00 : 00

Time Multiplier: 1

Total Material Cost: \$ 0.0
Add % : 0

Total Labor Cost: \$ 0.0
Add % : 0

4. Select

- 75 mm
- 100 mm
- 150 mm
- 225 mm
- 300 mm**

Additional Information: _____

6. Meters: 20

Results

Hrs : min

Total time: _____

Time multiplier: 1

Total Cost: \$ \$ 0.00

Calculate Totals

Add to Table

Generate Invoice

SELECT THE "CALCULATE BUTTON"

Electrical Estimating

1. Select main group:

- Conduit and Fittings
- Cable Tray**
- Lighting Fixtures
- Surface ducts
- Bus Duct
- Underfloor duct
- Equipment connection
- Assemblies
- Fuse boards and Internal equipment
- Switches, Socket outlets and MISC equip

2. Select Sub-Group:

- Perforated cable tray**
- Cable Ladder rack
- Louver Opening cable tray and fittings
- Aluminium Ladder type cable tray

3. Select Type:

- Perforated cable tray**
- Couplings
- Bends
- Tees
- Reducers

Type selected: **Perforated cable tray**

Project Name: _____

Group	Sub Group	Type	Size

Miscellaneous Setup
Create Assembly

Project Information
Hourly rate: \$ % :

4. Select Size or Description:

- 75 mm
- 100 mm
- 150 mm
- 225 mm
- 300 mm**

Additional Information: _____

5. Cost per Meter:

6. Meters:

Results

Total time: Hrs : min

Time multiplier:

Total Cost: \$ **400.0**

Calculate Totals
Add to Table
Generate Invoice

NOTE THAT THE SOFTWARE HAS CALCULATED THAT IT WILL REQUIRE THIS MUCH TIME TO INSTALL THIS ITEM

Electrical Estimating

1. Select main group:

- Conduit and Fittings
- Cable Tray**
- Lighting Fixtures
- Surface ducts
- Bus Duct
- Underfloor duct
- Equipment connection
- Assemblies
- Fuse boards and Internal equipment
- Switches, Socket outlets and MISC equip

2. Select Sub-Group:

- Perforated cable tray**
- Cable Ladder rack
- Louver Opening cable tray and fittings
- Aluminium Ladder type cable tray

3. Select Type:

- Perforated cable tray**
- Couplings
- Bends
- Tees
- Reducers

Type selected: **Perforated cable tray**

Project Name: _____

Group	Sub Group	Type	Size

Miscellaneous Setup
Create Assembly

Total Time: Hrs : Min
Time Multiplier:

Total Material Cost: \$
Add % :

Door Cost: \$
Add % :

Results

Total time: Hrs : min

Time multiplier:

Total Cost: \$ **400.0**

Calculate Totals
Add to Table
Generate Invoice

IF YOU AGREE WITH THE TIME AUTOMATICALLY ALLOCATED TO THE INSTALLATION "PRESS" ADD TO TABLE

Electrical Estimating

1. Select main group:

- Conduit and Fittings
- Cable Tray**
- Lighting Fixtures
- Surface ducts
- Bus Duct
- Underfloor duct
- Equipment connection
- Assemblies
- Fuse boards and Internal equipment
- Switches, Socket outlets and MISC equip

2. Select Sub-Group:

- Perforated cable tray**
- Cable Ladder rack
- Louver Opening cable tray and fittings
- Aluminium Ladder type cable tray

3. Select Type:

- Perforated cable tray**
- Couplings
- Bends
- Tees
- Reducers

Type selected: **Perforated cable tray**

Project Name: _____

Group	Sub Group	Type	Size
Cable Tray	Perforated cable tray	Perforated cable tray	
		Totals:	

NOTE YOUR ITEM HAS BEEN ADDED TO THE TABLE

Miscellaneous Setup
Create Assembly

Project Information
Edit Delete

4. Select Size or Description:

- 75 mm
- 100 mm
- 150 mm
- 225 mm
- 300 mm**

Additional Information: _____

5. Cost per Meter: 20

6. Meters: 20

Total Time: Hrs : Min 06 : 50
Time Multiplier: 1
Hourly rate: \$ 0.0

Total Material Cost: \$ 400.0
Add %: 0
Total Labor Cost: \$.0
Add %: 0

Results Hrs : min
Total time: 06 50
Time multiplier: 1
Total Cost: \$ 400.0

Calculate Totals
Add to Table
 Generate Invoice